

# Milling Circuit Boards with CircuitPro and S63 LPKF Machine

Instituto Tecnológico de Morelia  
Maestría en Ciencias en Ingeniería Electrónica  
"José María Morelos y Pavón"

15 de junio de 2018

# Índice

- 1** Machine Setup
  - The tool magazine
  - CAD systems
- 2** The CircuitPRO GUI
- 3** How to create a new project
  - Project stages
  - How many layers
  - Substrate
  - Layer files
    - The Layers
    - The Drill Layers
    - Contour router layer

# Machine Setup



Figure: Hardware configuration

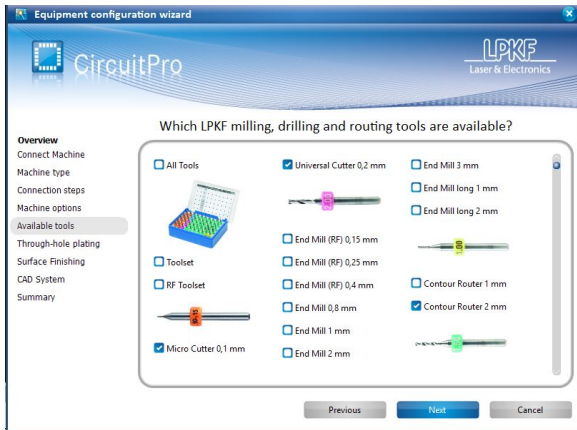
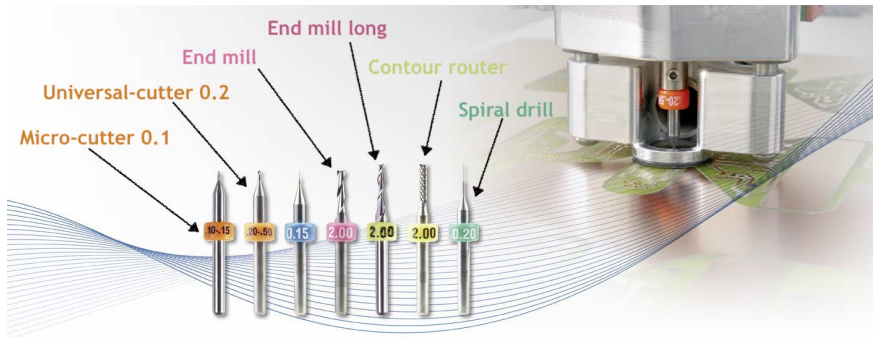


Figura: Tool selection window

# Milling and Drilling Tools







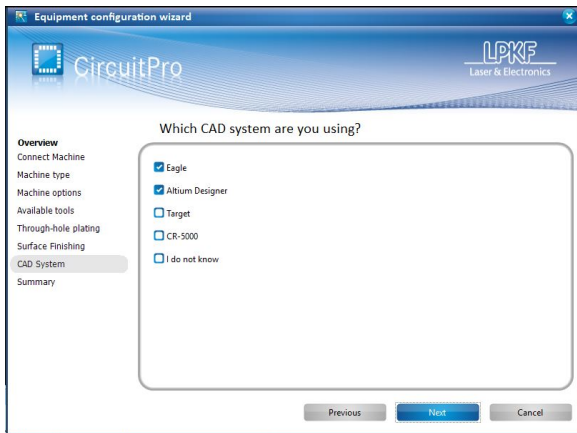


Figura: CAD Software Selection



# GUI

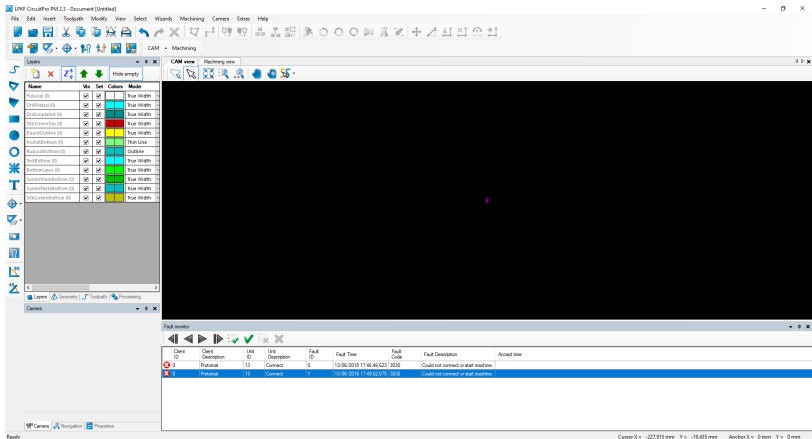


Figura: The CircuitPro Graphic User Interface

## Project stages

Once the machine has been configured, most of the PCBs follow the next process:

- Load a template project (**Single Side, Double Side, ...**)
- Import the **Gerber** files
- Create the tool-paths and link the tools
- Board Production

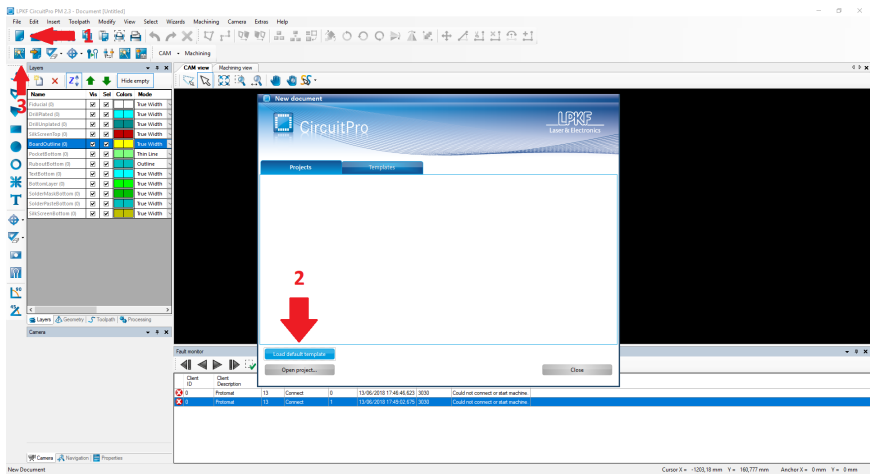


Figura: Cargar plantilla predeterminada

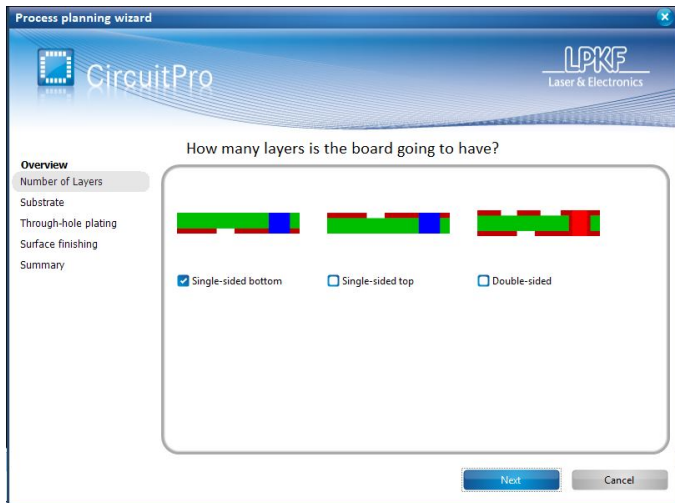


Figura: Selección de tipo de PCB

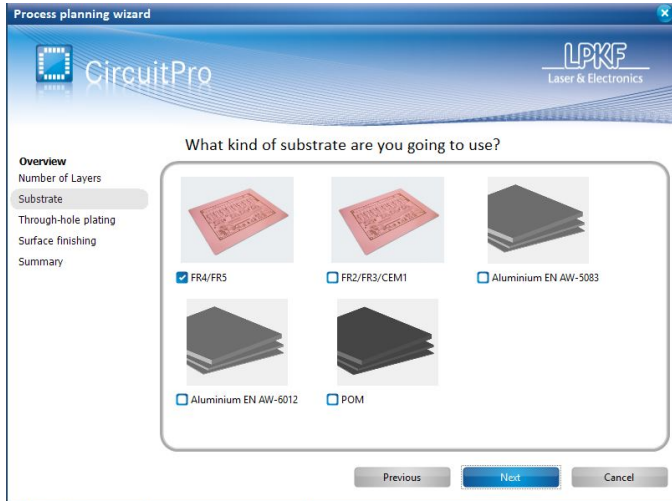


Figura: Selección de material

The screenshot displays the CircuitPRO software interface. On the left, the 'Layers' panel lists various layers with checkboxes for visibility and settings. A red arrow points to the 'New' button. The main workspace shows a dark area with a small purple cursor. At the bottom, a 'Fault monitor' table displays error details.

Dist ID	Dist Description	Use ID	Use Description	Fault ID	Fault Time	Fault Code	Fault Description	Accept time
0	Protocat	13	Connect	0	13/05/2018 17:46:45.623	3030	Could not connect or stat machine	
1	Protocat	13	Connect	1	13/05/2018 17:48:02.576	3030	Could not connect or stat machine	

Figura: Layer files importing

## Allowed files

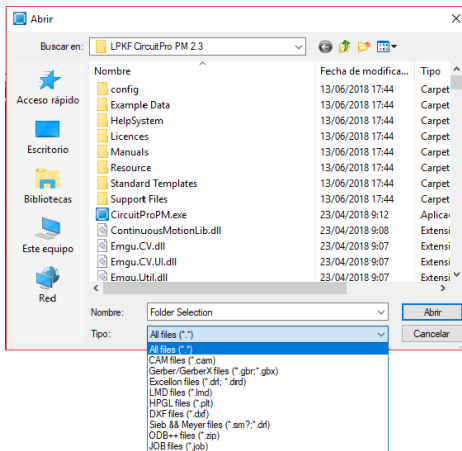


Figura: Archivos admitidos

The file extension depends on the CAD software used. For Altium, the layers generated are the KeepOut, Bottom Layer and Top Layer, respectively (\*.GKO, \*.GBL y \*.GTL).



# Tipos de archivos admitidos

## Bottom layer

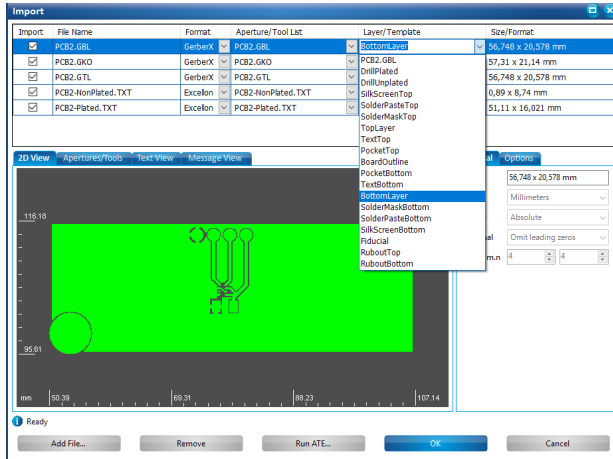


Figura: Bottom layer file

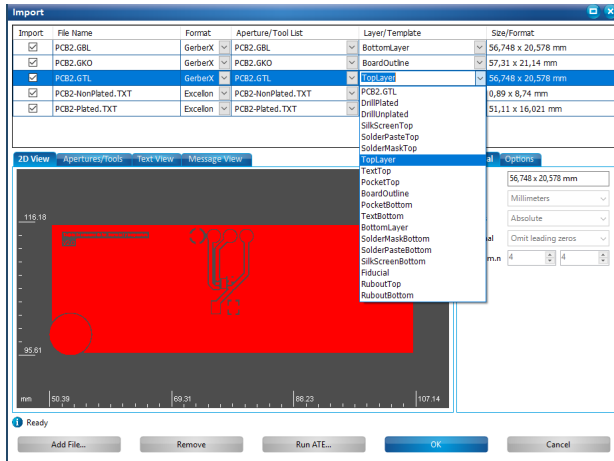


Figura: Top layer file

# The Drill Layers

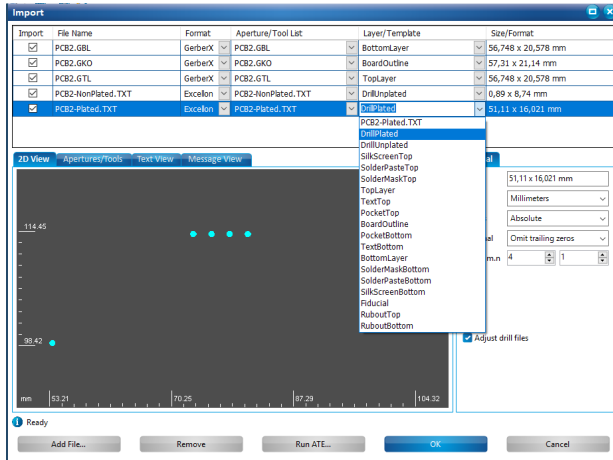


Figura: Drill layer importing

# Capas de corte

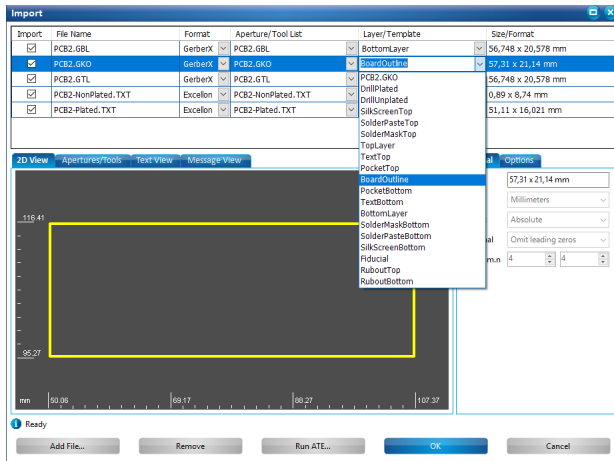


Figura: The board Outline Layer